

# Schenectady, New York

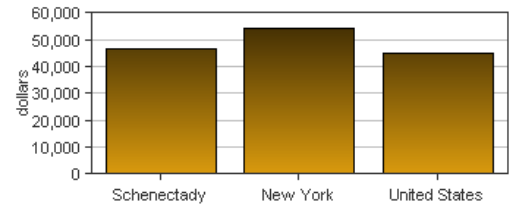
*Personal income last published on November 20, 2014.*

Schenectady is one of 62 counties in New York. It is part of the Albany-Schenectady-Troy, NY Metropolitan Statistical Area. Its 2013 population of 155,333 ranked 22nd in the state.

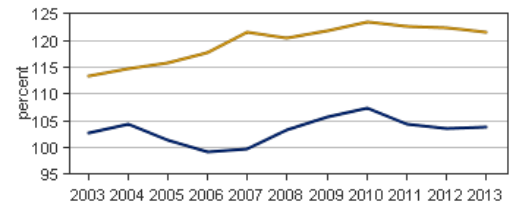
## Per Capita Personal Income

In 2013, Schenectady had a per capita personal income (PCPI) of \$46,502. This PCPI ranked 15th in the state and was 85 percent of the state average, \$54,462, and 104 percent of the national average, \$44,765. The 2013 PCPI reflected an increase of 1.6 percent from 2012. The 2012-2013 state change was 0.7 percent and the national change was 1.3 percent. In 2003, the PCPI of Schenectady was \$33,562 and ranked 11th in the state. The 2003-2013 compound annual growth rate of PCPI was 3.3 percent. The compound annual growth rate for the state was 3.9 percent and for the nation was 3.2 percent.

Per Capita Personal Income, 2013



Per Capita Income as a Percent of the United States



● Schenectady  
● New York

## Total Personal Income

In 2013, Schenectady had a total personal income (TPI) of \$7,223,259\*. This TPI ranked 21st in the state and accounted for 0.7 percent of the state total. In 2003, the TPI of Schenectady was \$4,963,529\* and ranked 21st in the state.

\*Total personal income estimates are in thousands of dollars, not adjusted for inflation.

	2012-2013 percent change	2003-2013 CAGR
Schenectady	1.8 %	3.8 %
New York	1.1 %	4.2 %
U.S.	2.0 %	4.1 %

*CAGR: compound annual growth rate*

## Components of Total Personal Income

Total personal income includes net earnings by place of residence; dividends, interest, and rent; and personal current transfer receipts received by the residents of Schenectady.

### 2012-2013 percent change

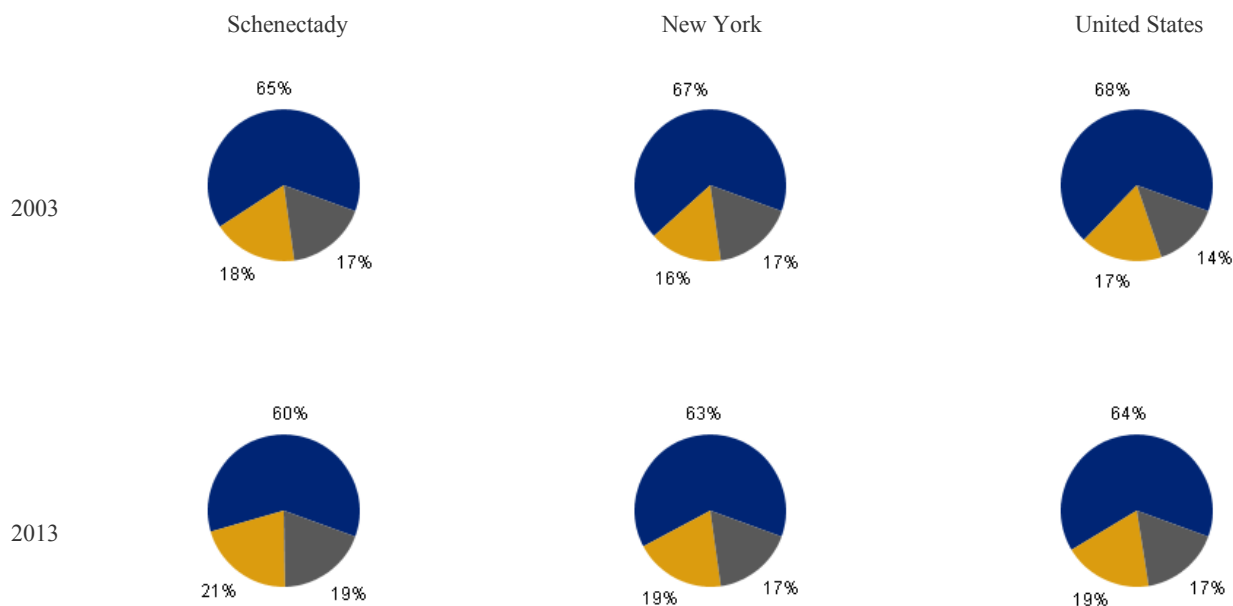
	Schenectady	New York	U.S.
Net earnings	1.7 %	0.8 %	1.8 %
Dividends, interest, and rent	2.1 %	2.0 %	2.1 %
Personal current transfer receipts	1.4 %	1.1 %	2.7 %

### 2003-2013 CAGR

	Schenectady	New York	U.S.
Net earnings	3.1 %	3.5 %	3.4 %
Dividends, interest, and rent	5.3 %	6.4 %	4.9 %
Personal current transfer receipts	4.9 %	4.3 %	6.0 %

*CAGR: compound annual growth rate*

### Percent Contribution to Total Personal Income



- 
- Net earnings by place of residence
  - Dividends, interest, and rent
  - Personal current transfer receipts