

# Philadelphia-Camden-Wilmington (MSA)

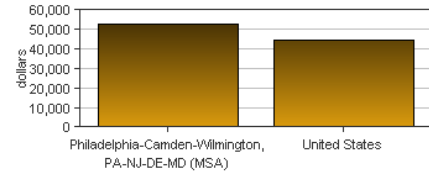
Personal income last published on November 20, 2014.

Philadelphia-Camden-Wilmington is one of 381 Metropolitan Statistical Areas (MSAs) in the nation. Its 2013 population of 6,034,678 ranked 6th in the nation.

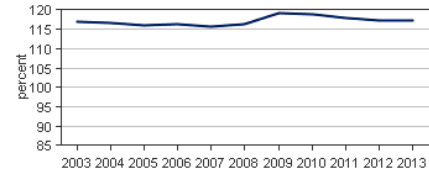
## Per Capita Personal Income

In 2013, Philadelphia-Camden-Wilmington had a per capita personal income (PCPI) of \$52,503. This PCPI ranked 22nd in the United States and was 117 percent of the national average, \$44,765. The 2013 PCPI reflected an increase of 1.2 percent from 2012. The 2012-2013 national change was 1.3 percent. In 2003, the PCPI of Philadelphia-Camden-Wilmington was \$38,197 and ranked 22nd in the United States. The 2003-2013 compound annual growth rate of PCPI was 3.2 percent. The compound annual growth rate for the nation was 3.2 percent.

Per Capita Personal Income, 2013



Per Capita Income as a Percent of the United States



## Total Personal Income

In 2013, Philadelphia-Camden-Wilmington had a total personal income (TPI) of \$316,838,374\*. This TPI ranked 7th in the United States. In 2003, the TPI of Philadelphia-Camden-Wilmington was \$220,542,767\* and ranked 5th in the United States.

\*Total personal income estimates are in thousands of dollars, not adjusted for inflation.

|                                | 2012-2013<br>percent<br>change | 2003-2013<br>CAGR |
|--------------------------------|--------------------------------|-------------------|
| Philadelphia-Camden-Wilmington | 1.4 %                          | 3.7 %             |
| U.S.                           | 2.0 %                          | 4.1 %             |

CAGR: compound annual growth rate

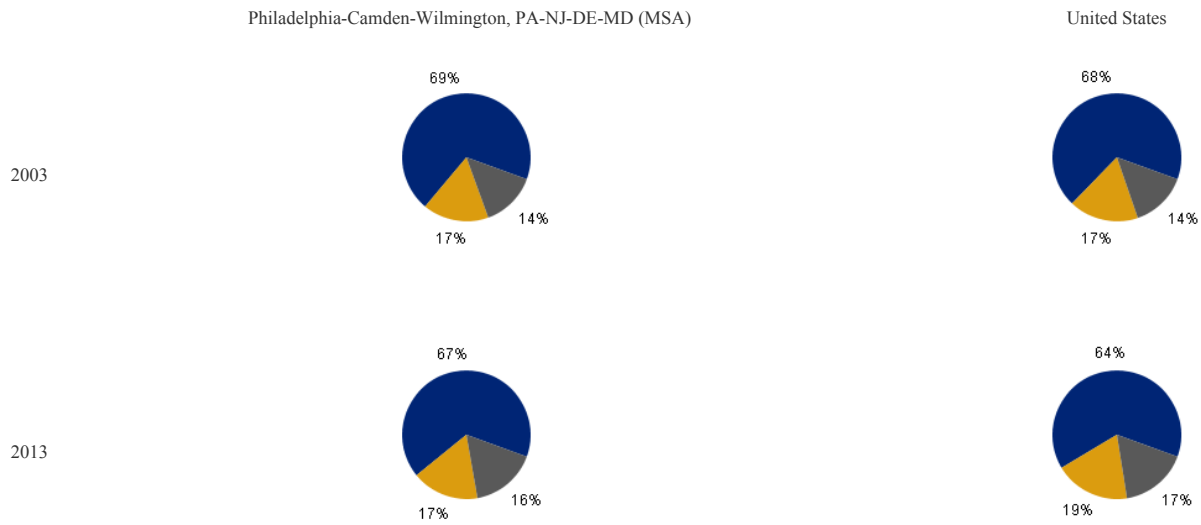
## Components of Total Personal Income

Total personal income includes net earnings by place of residence; dividends, interest, and rent; and personal current transfer receipts received by the residents of Philadelphia-Camden-Wilmington.

|                                    | 2012-2013 percent change                          |       | 2003-2013 CAGR                                    |       |
|------------------------------------|---|-------|---|-------|
|                                    | Philadelphia-Camden-Wilmington, PA-NJ-DE-MD (MSA) | U.S.  | Philadelphia-Camden-Wilmington, PA-NJ-DE-MD (MSA) | U.S.  |
| Net earnings                       | 1.1 %   | 1.8 % | 3.2 %   | 3.4 % |
| Dividends, interest, and rent      | 2.4 %   | 2.1 % | 4.0 %   | 4.9 % |
| Personal current transfer receipts | 1.9 %   | 2.7 % | 5.4 %   | 6.0 % |

*CAGR: compound annual growth rate*

## Percent Contribution to Total Personal Income



- Net earnings by place of residence
- Dividends, interest, and rent
- Personal current transfer receipts