

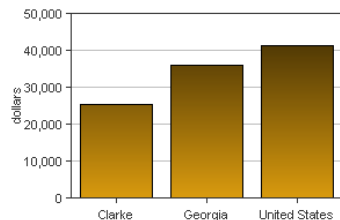
Clarke, Georgia

Clarke is one of 159 [counties](#) in Georgia. It is part of the [Athens-Clarke County, GA \(Metropolitan Statistical Area\)](#) Metropolitan Statistical Area. Its 2011 population of 117,344 ranked 19th in the state.

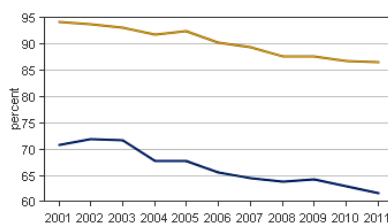
PER CAPITA PERSONAL INCOME

In 2011 Clarke had a per capita personal income (PCPI) of \$25,587. This PCPI ranked 127th in the state and was 71 percent of the state average, \$35,979, and 62 percent of the national average, \$41,560. The 2011 PCPI reflected an increase of 2.0 percent from 2010. The 2010-2011 state change was 4.2 percent and the national change was 4.4 percent. In 2001 the PCPI of Clarke was \$22,102 and ranked 82nd in the state. The 2001-2011 compound annual growth rate of PCPI was 1.5 percent. The compound annual growth rate for the state was 2.1 percent and for the nation was 2.9 percent.

Per Capita Personal Income, 2011



Per Capita Income as a Percent of the United States



■ Georgia ■ Clarke

TOTAL PERSONAL INCOME

	2010-11 percent change	2001-2011 CAGR
Clarke	2.6 %	2.7 %
Georgia	5.3 %	3.7 %
U.S.	5.2 %	3.8 %

CAGR: compound annual growth rate

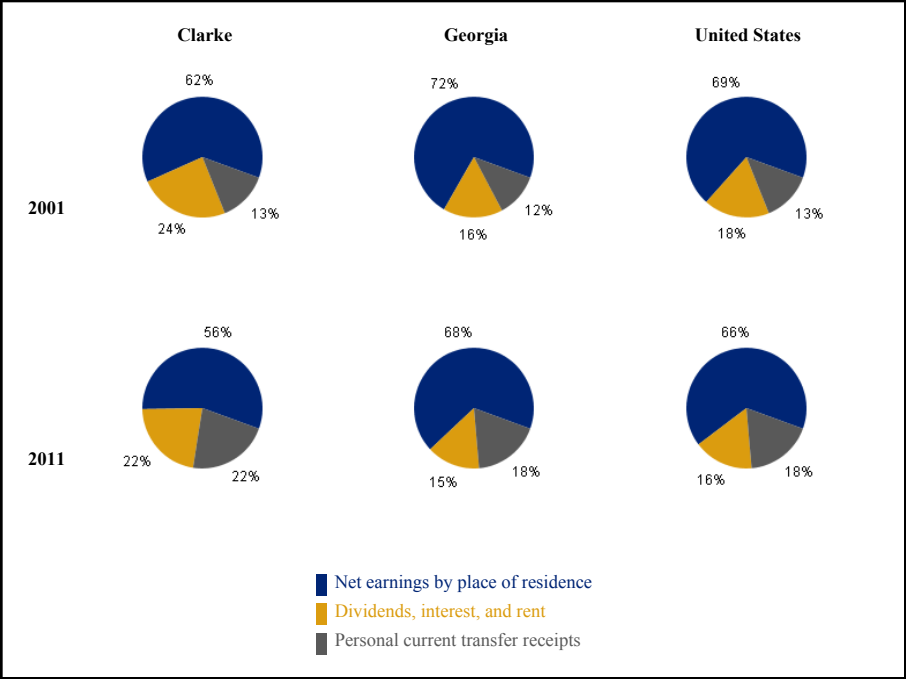
In 2011 Clarke had a total personal income (TPI) of \$3,002,539*. This TPI ranked 23rd in the state and accounted for 0.9 percent of the state total. In 2001 the TPI of Clarke was \$2,296,206* and ranked 20th in the state.

*Note: Total personal income estimates are in thousands of dollars, not adjusted for inflation.

COMPONENTS OF TOTAL PERSONAL INCOME

Total personal income includes net earnings by place of residence; dividends, interest, and rent; and personal current transfer receipts received by the residents of Clarke.

Percent Contribution to Total Personal Income



2010-2011 percent change			
	Clarke	Georgia	U.S.
Net earnings	0.3 %	5.1 %	5.7 %
Dividends, interest, and rent	7.4 %	8.1 %	7.5 %
Personal current transfer receipts	3.9 %	3.8 %	1.5 %

2001-2011 compound annual growth rate			
	Clarke	Georgia	U.S.
Net earnings	1.6 %	3.0 %	3.4 %
Dividends, interest, and rent	1.8 %	2.6 %	2.9 %
Personal current transfer receipts	7.9 %	8.3 %	6.9 %