

Montgomery, New York

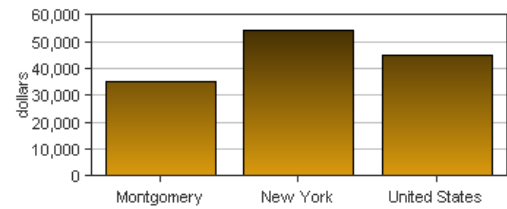
Personal income last published on November 20, 2014.

Montgomery is one of 62 counties in New York. It is part of the Amsterdam, NY Micropolitan Statistical Area. Its 2013 population of 49,897 ranked 48th in the state.

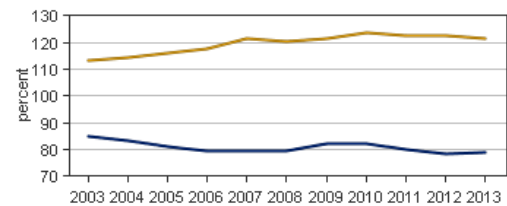
Per Capita Personal Income

In 2013, Montgomery had a per capita personal income (PCPI) of \$35,310. This PCPI ranked 53rd in the state and was 65 percent of the state average, \$54,462, and 79 percent of the national average, \$44,765. The 2013 PCPI reflected an increase of 1.9 percent from 2012. The 2012-2013 state change was 0.7 percent and the national change was 1.3 percent. In 2003, the PCPI of Montgomery was \$27,705 and ranked 27th in the state. The 2003-2013 compound annual growth rate of PCPI was 2.5 percent. The compound annual growth rate for the state was 3.9 percent and for the nation was 3.2 percent.

Per Capita Personal Income, 2013



Per Capita Income as a Percent of the United States



Total Personal Income

In 2013, Montgomery had a total personal income (TPI) of \$1,761,855*. This TPI ranked 51st in the state and accounted for 0.2 percent of the state total. In 2003, the TPI of Montgomery was \$1,370,001* and ranked 47th in the state.

**Total personal income estimates are in thousands of dollars, not adjusted for inflation.*

	2012-2013 percent change	2003-2013 CAGR
Montgomery	1.9 %	2.5 %
New York	1.1 %	4.2 %
U.S.	2.0 %	4.1 %

CAGR: compound annual growth rate

Components of Total Personal Income

Total personal income includes net earnings by place of residence; dividends, interest, and rent; and personal current transfer receipts received by the residents of Montgomery.

2012-2013 percent change

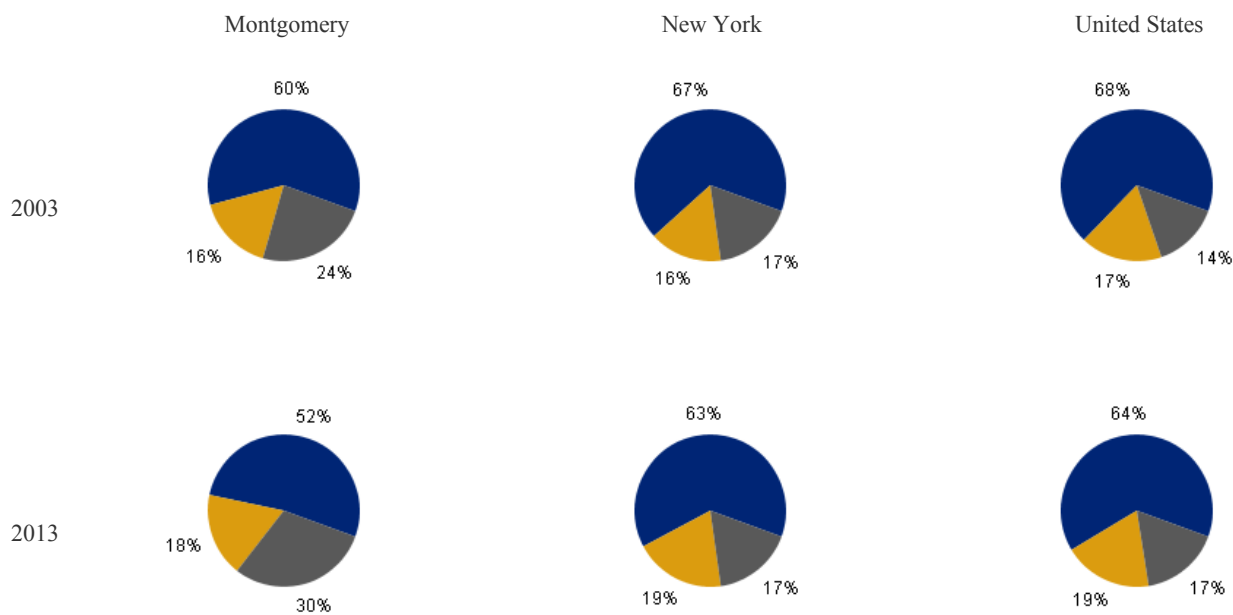
	Montgomery	New York	U.S.
Net earnings	1.7 %	0.8 %	1.8 %
Dividends, interest, and rent	3.5 %	2.0 %	2.1 %
Personal current transfer receipts	1.3 %	1.1 %	2.7 %

2003-2013 CAGR

	Montgomery	New York	U.S.
Net earnings	1.2 %	3.5 %	3.4 %
Dividends, interest, and rent	3.5 %	6.4 %	4.9 %
Personal current transfer receipts	4.8 %	4.3 %	6.0 %

CAGR: compound annual growth rate

Percent Contribution to Total Personal Income



-
- Net earnings by place of residence
 - Dividends, interest, and rent
 - Personal current transfer receipts