



Athens-Clarke County, GA (MSA)

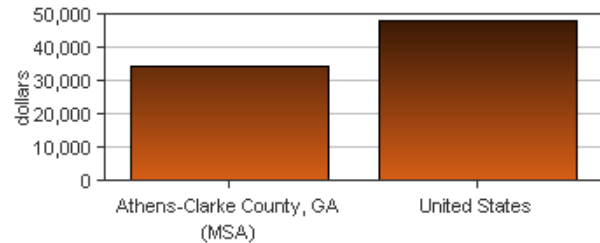
Personal income last published on November 17, 2016.

Athens-Clarke County, GA (MSA) is one of Metropolitan Statistical Areas (MSAs) in United States. Its 2015 population of 203,189 ranked 218th in the United States.

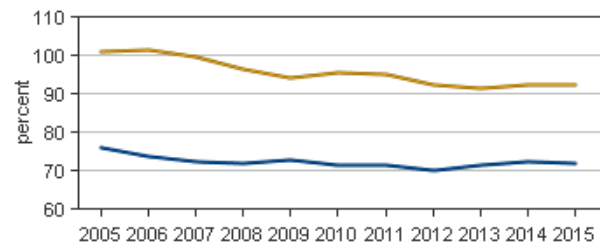
Per Capita Personal Income

In 2015, Athens-Clarke County, GA (MSA) had a per capita personal income (PCPI) of \$34,596. This PCPI ranked 347th in the United States and was 78 percent of the state average, \$44,429, and 72 percent of the national average, \$48,112. The 2015 PCPI reflected an increase of 2.6 percent from 2014. The 2014-2015 state change was 3.6 percent and the national change was 3.7 percent. In 2005, the PCPI of Athens-Clarke County, GA (MSA) was \$27,386 and ranked 313th in the United States. The 2005-2015 compound annual growth rate of PCPI was 2.4 percent. The compound annual growth rate for the state was 2.1 percent and for the nation was 3.0 percent.

Per Capita Personal Income, 2015



Per Capita Income as a Percent of the United States



- Athens-Clarke County, GA (MSA)
- United States

Personal Income

In 2015, Athens-Clarke County, GA (MSA) had a personal income of \$7,029,432*. This personal income ranked 239th in the United States and accounted for 0.8 percent of the state total. In 2005, the personal income of Athens-Clarke County, GA (MSA) was \$4,901,296* and ranked 233rd in the United States.

*Personal income estimates are in thousands of dollars, not adjusted for inflation.

	2014-2015 percent change	2005-2015 CAGR
Athens-Clarke County, GA (MSA)	4.7 %	3.7 %
United States	5.5 %	3.4 %
U.S.	4.5 %	3.8 %

CAGR: compound annual growth rate

Components of Personal Income

Personal income includes net earnings by place of residence; dividends, interest, and rent; and personal current transfer receipts received by the residents of Athens-Clarke County, GA (MSA).

2014-2015 percent change

	Athens-Clarke County, GA (MSA)	U.S.
Net earnings	4.9 %	4.7 %
Dividends, interest, and rent	3.4 %	2.8 %
Personal current transfer receipts	5.5 %	5.4 %

2005-2015 CAGR

	Athens-Clarke County, GA (MSA)	U.S.
Net earnings	2.6 %	3.2 %
Dividends, interest, and rent	4.7 %	4.3 %
Personal current transfer receipts	6.8 %	5.9 %

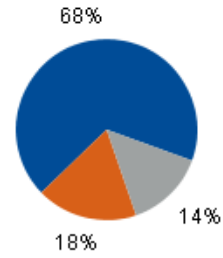
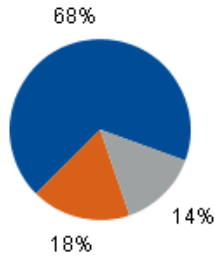
CAGR: compound annual growth rate

Percent Contribution to Personal Income

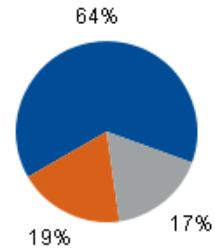
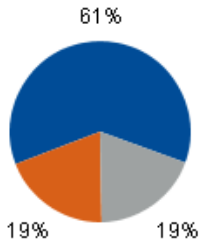
Athens-Clarke County, GA (MSA)

United States

2005



2015



- Net earnings by place of residence
- Dividends, interest, and rent
- Personal current transfer receipts

